

# Eastern San Joaquin Subbasin Groundwater Sustainability Workgroup May 8, 2019



**EASTERN SAN JOAQUIN  
GROUNDWATER AUTHORITY**

# Agenda



EASTERN SAN JOAQUIN  
GROUNDWATER AUTHORITY

- Meeting Objectives
- Bundle 1 – Draft Chapter Overview
- Implementation Plan
- Announcements



# Meeting Objectives

# Meeting Objectives



EASTERN SAN JOAQUIN  
GROUNDWATER AUTHORITY

1. Discuss draft chapters and review HCM requirements
  - Presentation and discussion of draft GSP chapters in Bundle 1 and timeline for comments.
2. Identify elements needed in GSP implementation plan
  - Brainstorm for elements needed in the GSP implementation plan and next steps.
  - Discussion Item: Provide Input of GWA next steps. Next steps for Workgroup?



# **Bundle 1 – Draft Chapter Overview**

# Bundle 1 – Draft GSP Chapters

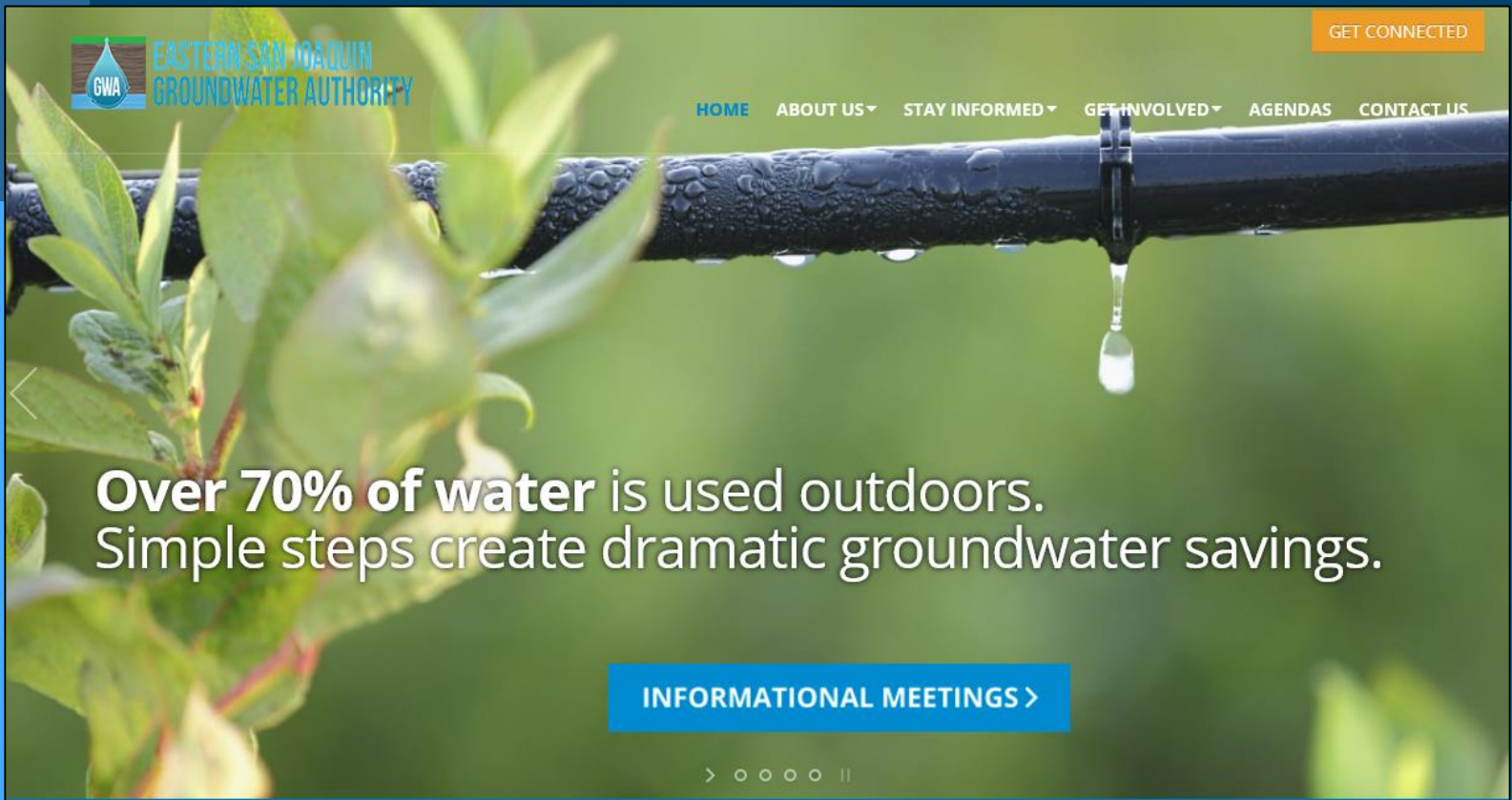


EASTERN SAN JOAQUIN  
GROUNDWATER AUTHORITY

Bundle 1 has been posted to website homepage:

[www.esjgroundwater.org](http://www.esjgroundwater.org)

- Text includes includes:
  - Administrative Information
  - Plan Area
  - Hydrogeologic Conceptual Model (HCM)
  - Data Compilation
  - Data Management System (DMS)
- Comments due June 1, 2019 (note: this is in addition to the 30-day public review period for the draft GSP)



Over 70% of water is used outdoors.  
Simple steps create dramatic groundwater savings.

[INFORMATIONAL MEETINGS >](#)

> ○ ○ ○ ○ ○ ||

[Draft GSP Chapters Bundle 1](#)

# Draft GSP – Administrative Information



EASTERN SAN JOAQUIN  
GROUNDWATER AUTHORITY

- 1.1 Purpose of the Groundwater Sustainability Plan
- 1.2 Sustainability Goal
- 1.3 Agency Information
  - 1.3.1 Eastern San Joaquin Authority Joint Powers Agreement
  - 1.3.2 Agency Contact Information
  - 1.3.3 Organization and Management Structure of the GSAs
  - 1.3.4 Legal Authority of the GSAs
  - 1.3.5 Estimated Cost of Implementing the GSP and Approach to Meeting Costs (In progress)
- 1.4 GSP Organization



# Draft GSP – Plan Area



- 2.1 Description of the Plan Area
  - 2.1.1 Summary of Jurisdictional Areas and Other Features
- 2.2 Plan Area Monitoring
  - 2.2.1 Existing Water Resources Monitoring and Management Programs
- 2.3 Land Use Elements or Topic Categories of Applicable General Plans
  - 2.3.1 Existing General Plans
  - 2.3.2 Land Use Plans Outside the Subbasin
  - 2.3.3 Well Permitting
- 2.4 Additional GSP Elements (In progress)
- 2.5 Notice and Communication
  - 2.5.1 Beneficial Uses and Users in the Basin
  - 2.5.2 Communications



## 3.2 Hydrologic Conceptual Model

- 3.2.1 Regional Geologic and Structural Setting
- 3.2.2 Geologic History
- 3.2.3 Near-Surface Conditions
- 3.2.4 Geologic Formations and Stratigraphy
- 3.2.5 Faults and Structural Features
- 3.2.6 Geologic Cross-Sections
- 3.2.7 Basin Boundaries
- 3.2.8 Principal Aquifer
- 3.2.9 HCM Data Gaps

# Draft GSP – Data Compilation & DMS



EASTERN SAN JOAQUIN  
GROUNDWATER AUTHORITY

## 3.1 Data Compilation

- 3.1.1 Groundwater Level Data
- 3.1.2 Groundwater Quality Data
- 3.1.3 Stratigraphic Data
- 3.1.4 GIS Data

## 5. Data Management System (DMS)

### 5.1 Overview of the Eastern San Joaquin Subbasin Data Management System

### 5.2 Functionality of the Data Management System

- 5.2.1 User and Data Access Permissions
- 5.2.2 Data Entry and Validation
- 5.2.3 Visualization and Analysis
- 5.2.4 Query and Reporting

### 5.3 Data Included in the Data Management System



# **Review: Hydrogeologic Conceptual Model Requirements**

# Hydrogeologic Conceptual Model Requirements



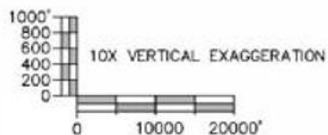
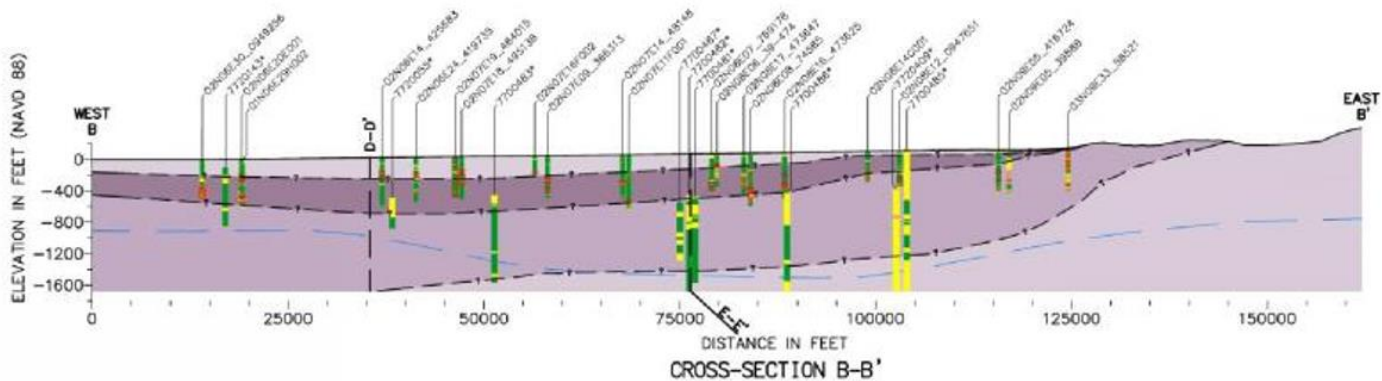
EASTERN SAN JOAQUIN  
GROUNDWATER AUTHORITY

- 1) Description of the physical components of the subbasin
- 2) Scaled cross-sections
- 3) Maps of physical characteristics:
  - Topographic information
  - Surficial geology
  - Soil characteristics
  - Recharge areas
  - Surface water bodies
  - Source and point of delivery for imported water supplies

# Example: B-B' Cross-Section



**EASTERN SAN JOAQUIN  
GROUNDWATER AUTHORITY**



## Legend

- Eastern San Joaquin Subbasin Boundary
- Formations**
- Modesto/Riverbank
- Turlock Lake/Laguna
- Mehrten
- Valley Springs/Ione
- Bedrock
- Base of Fresh Water
- Screens
- Cross-Section Intercepts
- Inferred Formation Contacts
- Well Strata**
- Clays and Silts
- Sands and Gravels
- Sedimentary Rock
- Igneous/Metamorphic Rocks
- Other

*Oil and Gas Wells are Indicated by \**



# Implementation Plan

# Items for GSP Implementation (Non-Project) – Part 1 of 3



EASTERN SAN JOAQUIN  
GROUNDWATER AUTHORITY

- Establishment of Monitoring Program
  - Coordination with monitoring entities
  - Creation of monitoring information (sheets/info/locations/etc.) for each monitoring point
  - Hiring/oversight of staff/contractors to do the monitoring
- Data collection & analysis
  - Water levels
  - Water quality
- Annual reporting
- Data Gaps



# Items for GSP Implementation (Non-Project) – Part 2 of 3



EASTERN SAN JOAQUIN  
GROUNDWATER AUTHORITY

- 5-yr update
  - Threshold evaluation and updating
  - Numerical Model Updates / Coordination
    - Incorporate new data sources (data gaps filled)
    - Recalibrate if necessary
    - New forecasts
    - Documentation, etc.
  - Evaluation of Initial GSP effectiveness
  - Plan to improve GSP (if needed)

# Items for GSP Implementation (Non-Project) – Part 3 of 3



EASTERN SAN JOAQUIN  
GROUNDWATER AUTHORITY

- Annual DMS updates (programming, data updates)
- General administration per coordination agreement (including audits, office expenses, insurance)
- Budget/schedule monitoring
- Public outreach
- Website maintenance
- GSA Board support (legal, administrative)
- Advisory Committee meeting support (administrative)
- Legal support
- Grant writing and administration



***Discussion: Provide Input of  
GWA next steps. Next steps  
for Workgroup?***



# Announcements

# Chapter Deliverable Release – Bundle 2



EASTERN SAN JOAQUIN  
GROUNDWATER AUTHORITY

- Bundle 2 (Water Budget and Current & Historical Conditions sections) will be released next – anticipated June 5.

**DRAFT**

# Eastern San Joaquin Subbasin Groundwater Sustainability Workgroup May 8, 2019



**EASTERN SAN JOAQUIN  
GROUNDWATER AUTHORITY**