

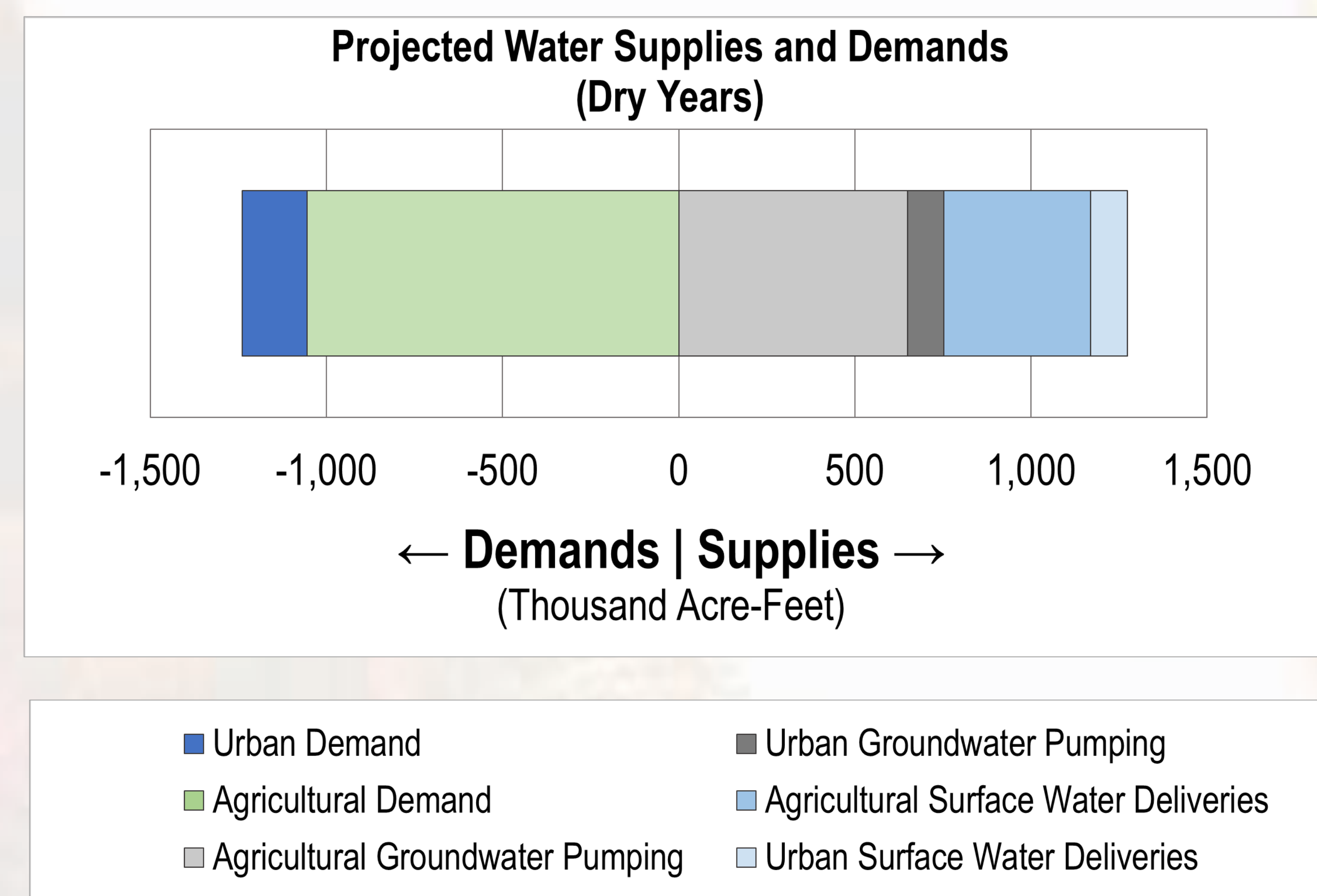
Water Budget

What is a Water Budget?

“Water In vs. Water Out”

A water budget operates like a bank account. Inflows (supplies) and outflows (demands) are tracked and compared over time to identify change in amount of water stored. Like a monetary budget, advanced planning can identify future needs and a strategy for meeting those needs.

- How much demand is from agriculture vs. urban use?
- Where will supplies come from to meet these demands?



Water Budget Timelines

Water budgets were prepared for three timeframes to analyze past, present, and future scenarios.

- **Historical Water Budget** – Uses historical information for land use, temperature, precipitation, and water year type going back a minimum of 10 years.
- **Current Conditions Baseline** – Uses the most recent data on population, land use, temperature, water year type, and hydrogeologic conditions projected out over 50 years of hydrology.
- **Projected Water Budget** – Uses estimated future population growth, land use changes, climate change, and sea level rise projected out over 50 years of hydrology.

Historical Water Budget & Current Conditions Baseline

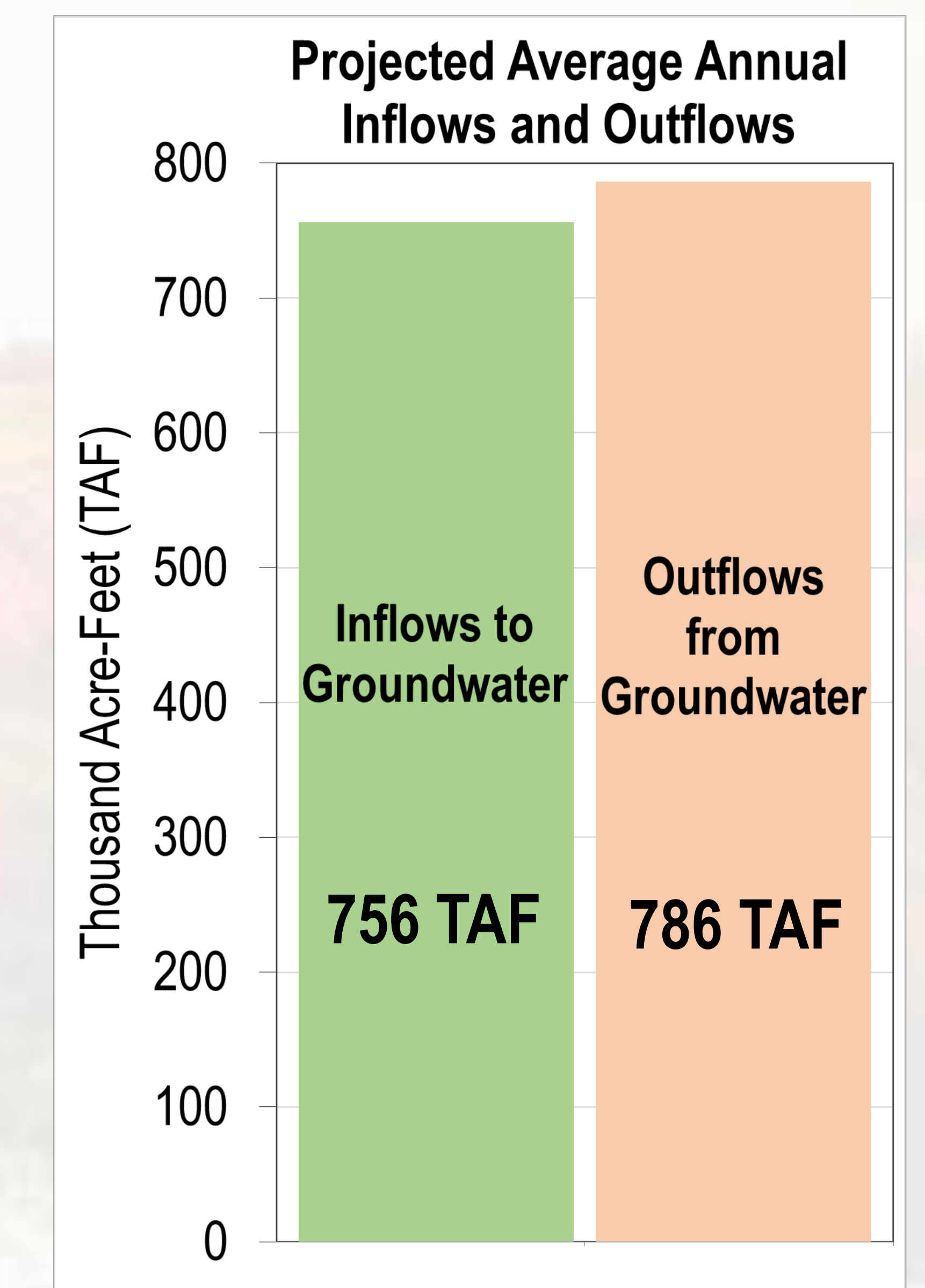
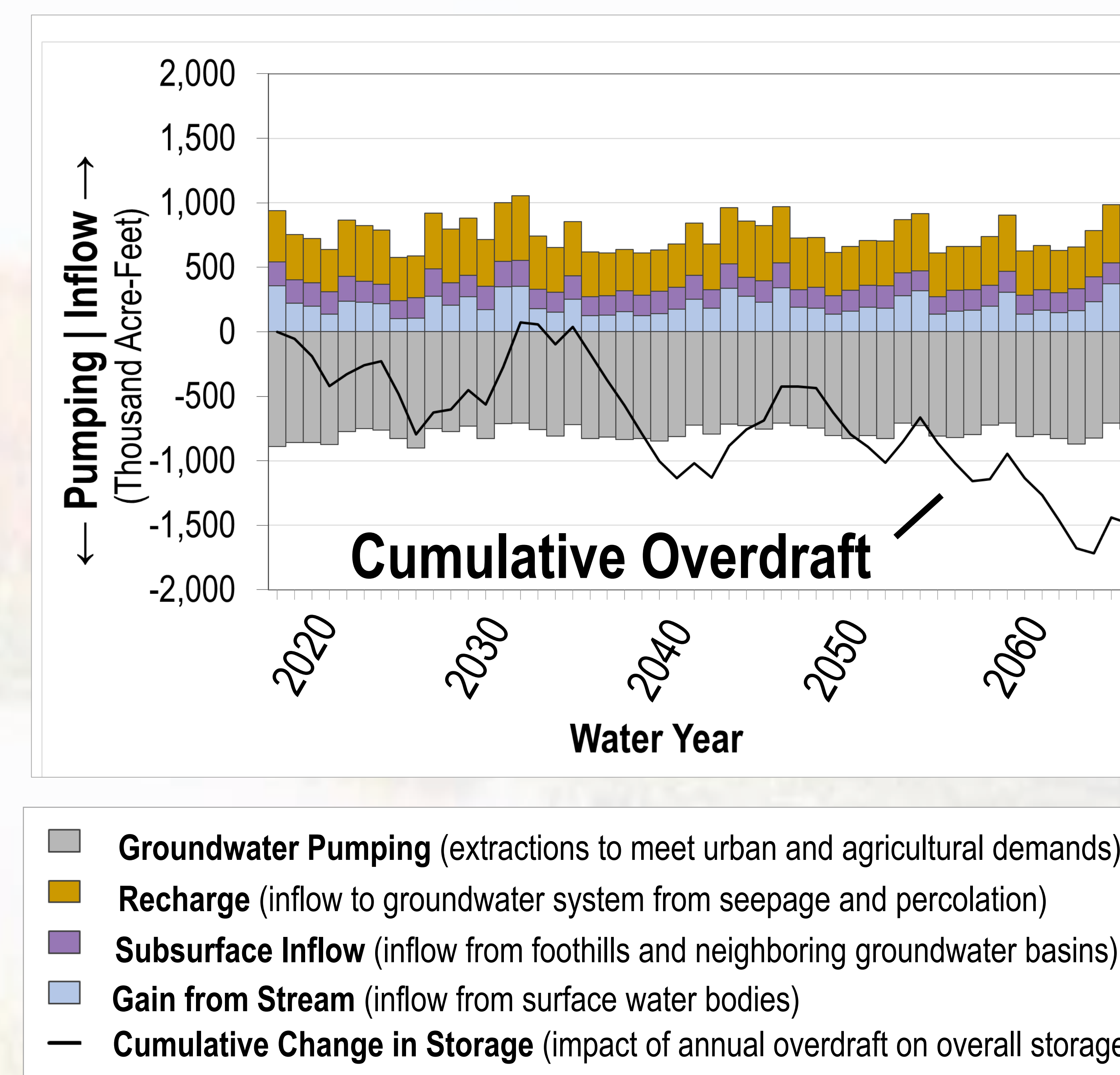
Prior work on the historical water budget and current conditions baseline provides a foundation for the projected water budget and gives context on past and present basin conditions, capturing periods of historical drought.

Projected Water Budget

What Does the Projected Water Budget Tell Us?

The projected water budget allows us to model future groundwater conditions under a variety of scenarios and helps us answer big SGMA questions.

- If no action is taken to address overdraft, what would the status of the basin be in fifty years?
- How much water savings is needed to halt overdraft and bring the basin into balance?



How Will the Projected Water Budget Be Used?

The projected water budget will be used to estimate future groundwater basin conditions, inform short-term operations, and guide long-term planning efforts through SGMA. The projected water budget tells us how much groundwater needs to be recharged to reach sustainability by 2040, which is the timeline required by SGMA.

