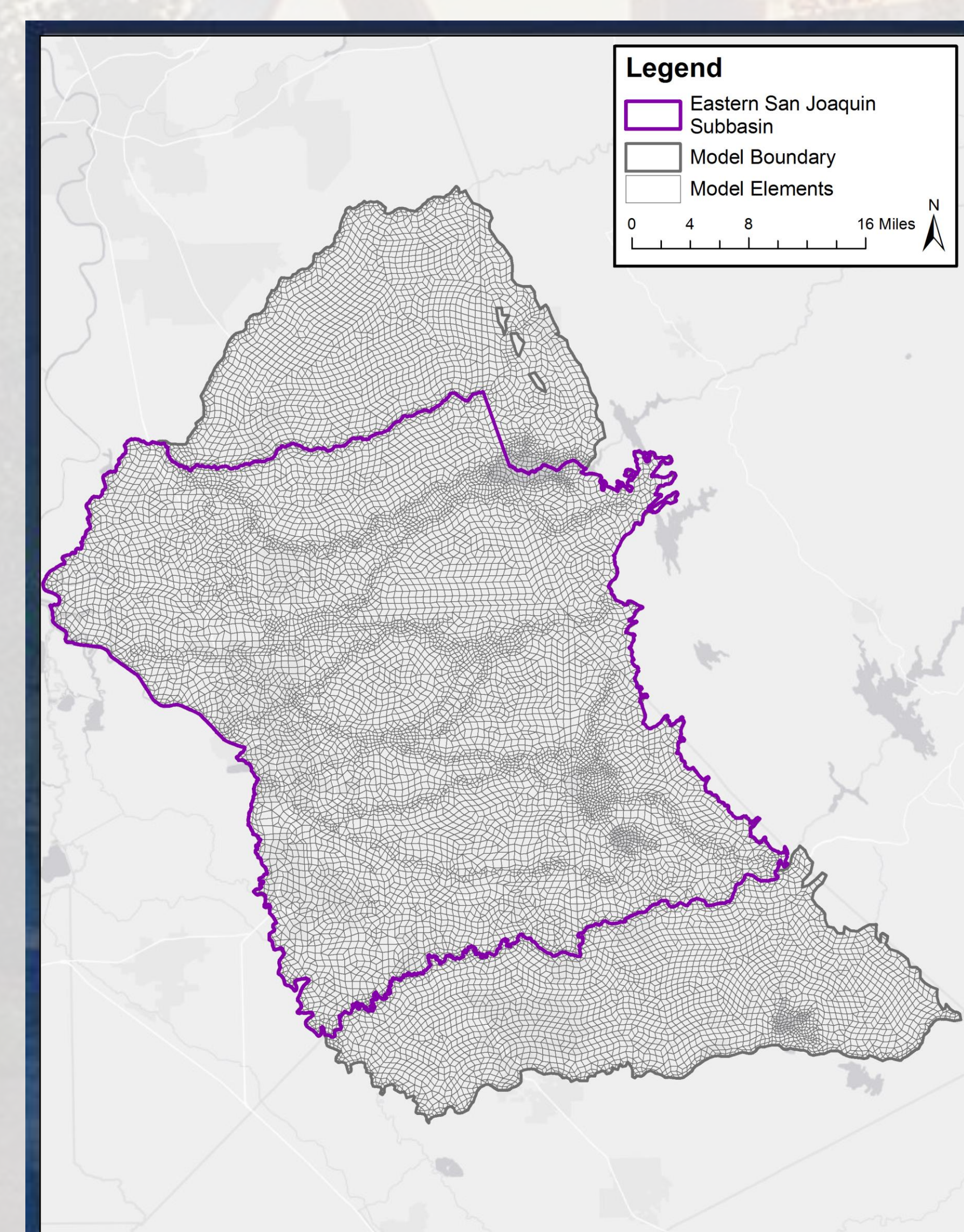


Technology

Water Resources Model

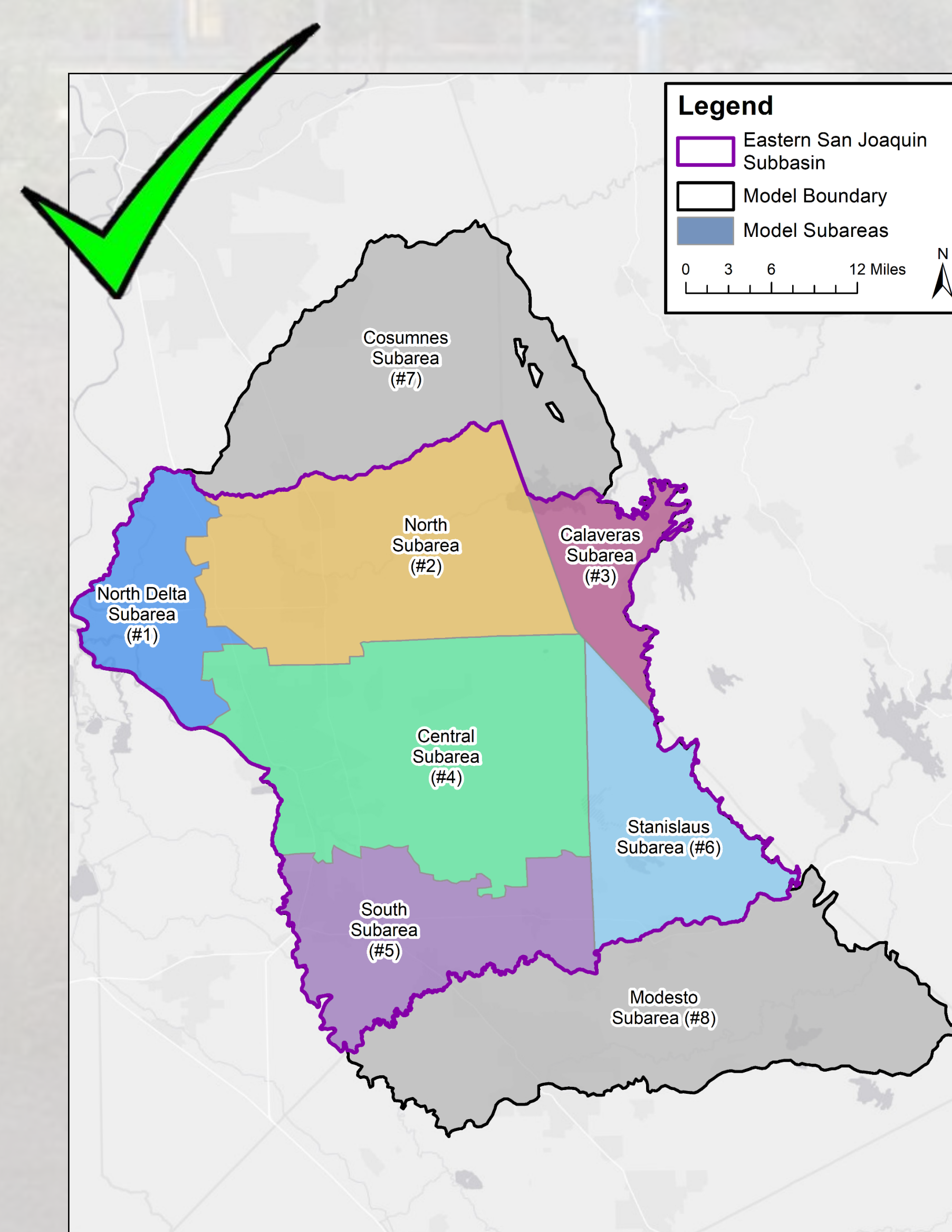
Model Background

Over the past 2 years, Eastern San Joaquin agencies have worked together to build a groundwater model that serves as a robust and defensible analytical tool to support GSP development.



Model Approved for Use

The GWA Board voted to approve the use of the model in the GSP development process in May 2018.



The Model Will Help Answer Big SGMA Questions...

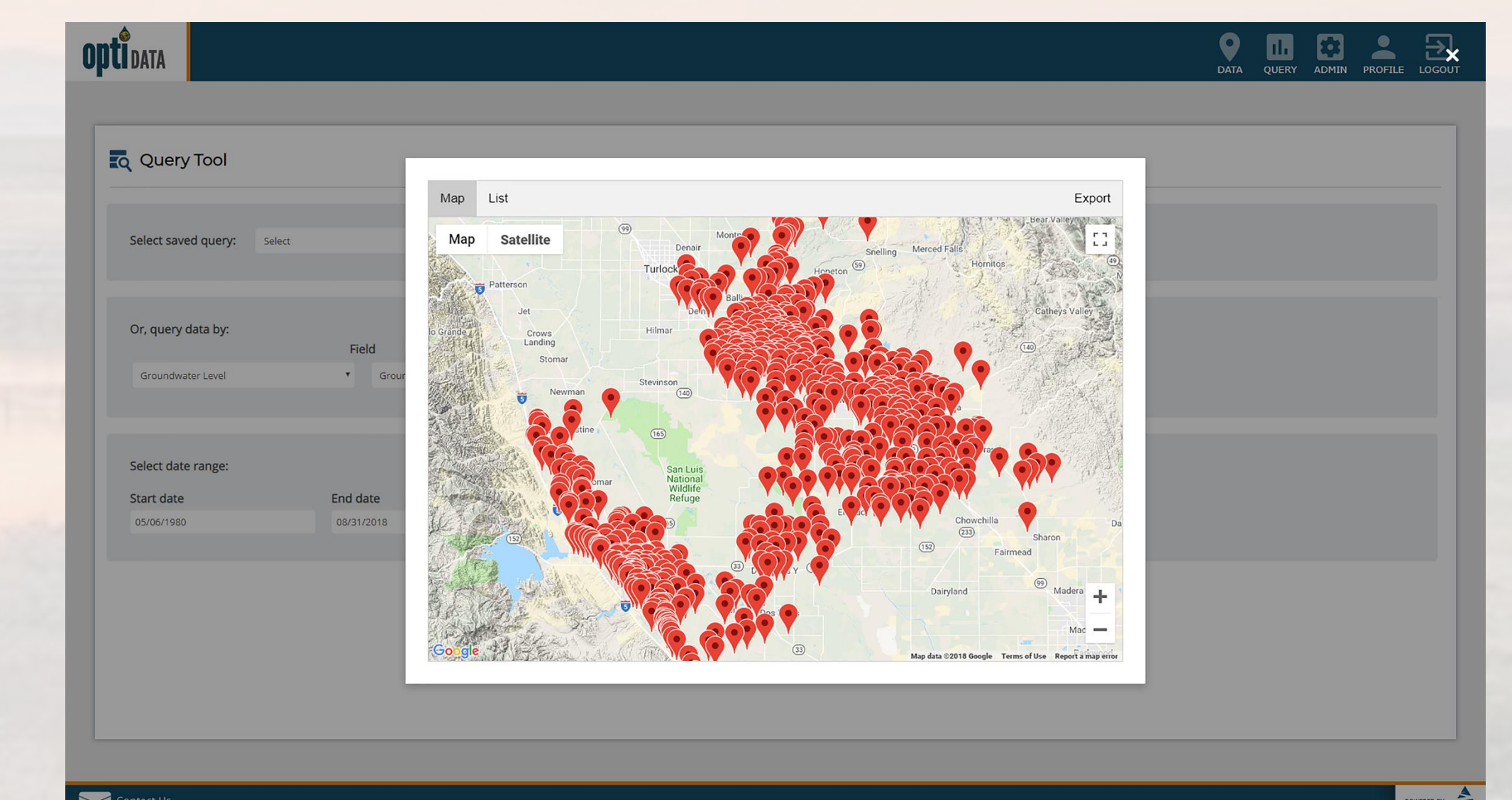
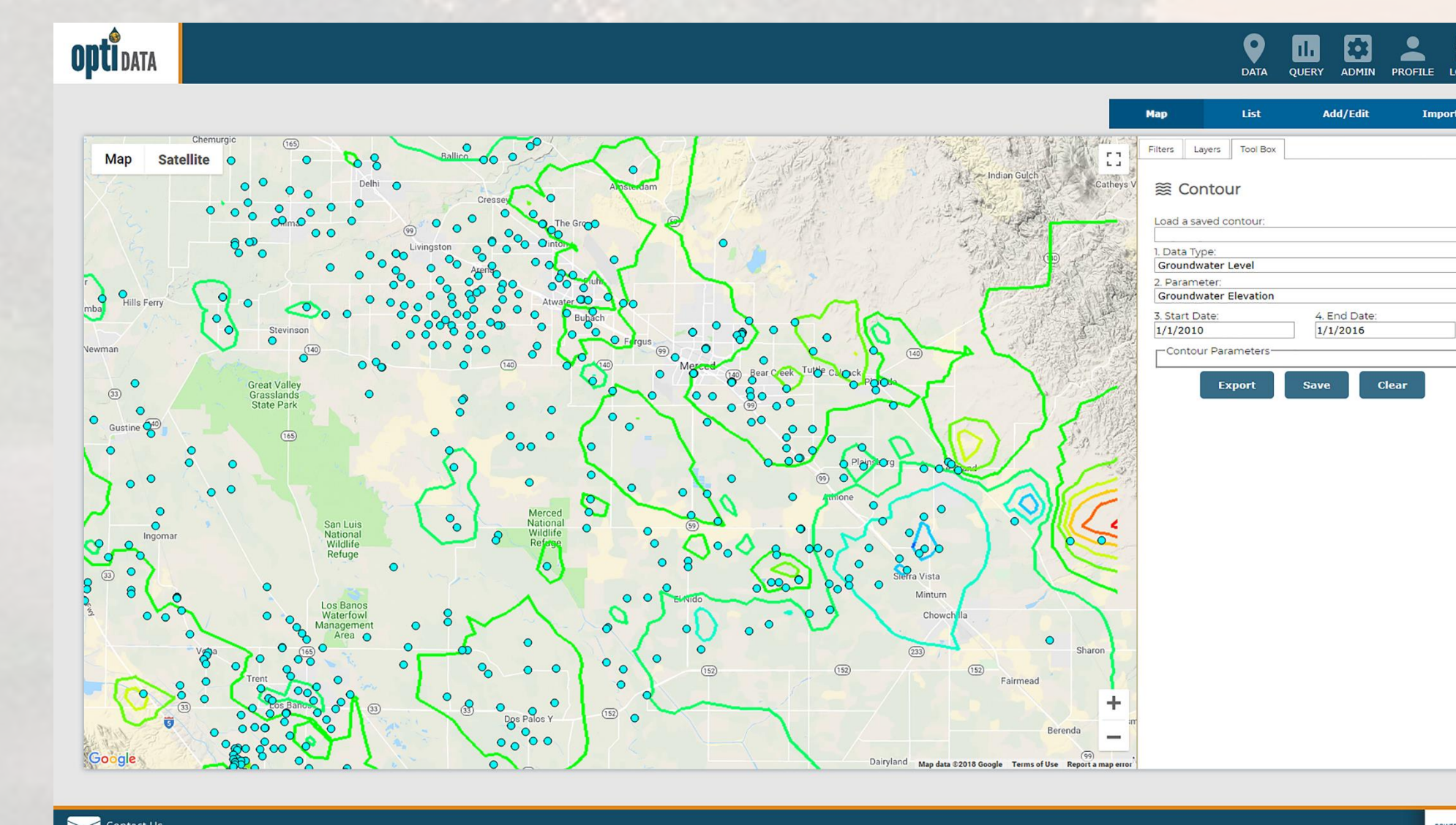
- How big is the problem?
- How long will it take to achieve sustainability?
- How will population growth affect future groundwater needs?
- What water projects will help us reach sustainability?
- What are the economic implications of sustainability?

Data Management System (DMS)

What is the DMS?

A Flexible, one-stop shop for managing groundwater data

- Allows for transparent and efficient data entry and visualization
- Supports coordination and data sharing
- Allows for automated reporting
- Will support sustainable groundwater management monitoring and give ESJ the ability to track undesirable results



How Will the DMS be Used?

The DMS will create a centralized and integrated repository for multiple data sources managed by stakeholders. It will serve as a data sharing portal to enable utilization of the same data and tools for visualization and analysis, which can be used to generate reports and track sustainability criteria and management objectives.

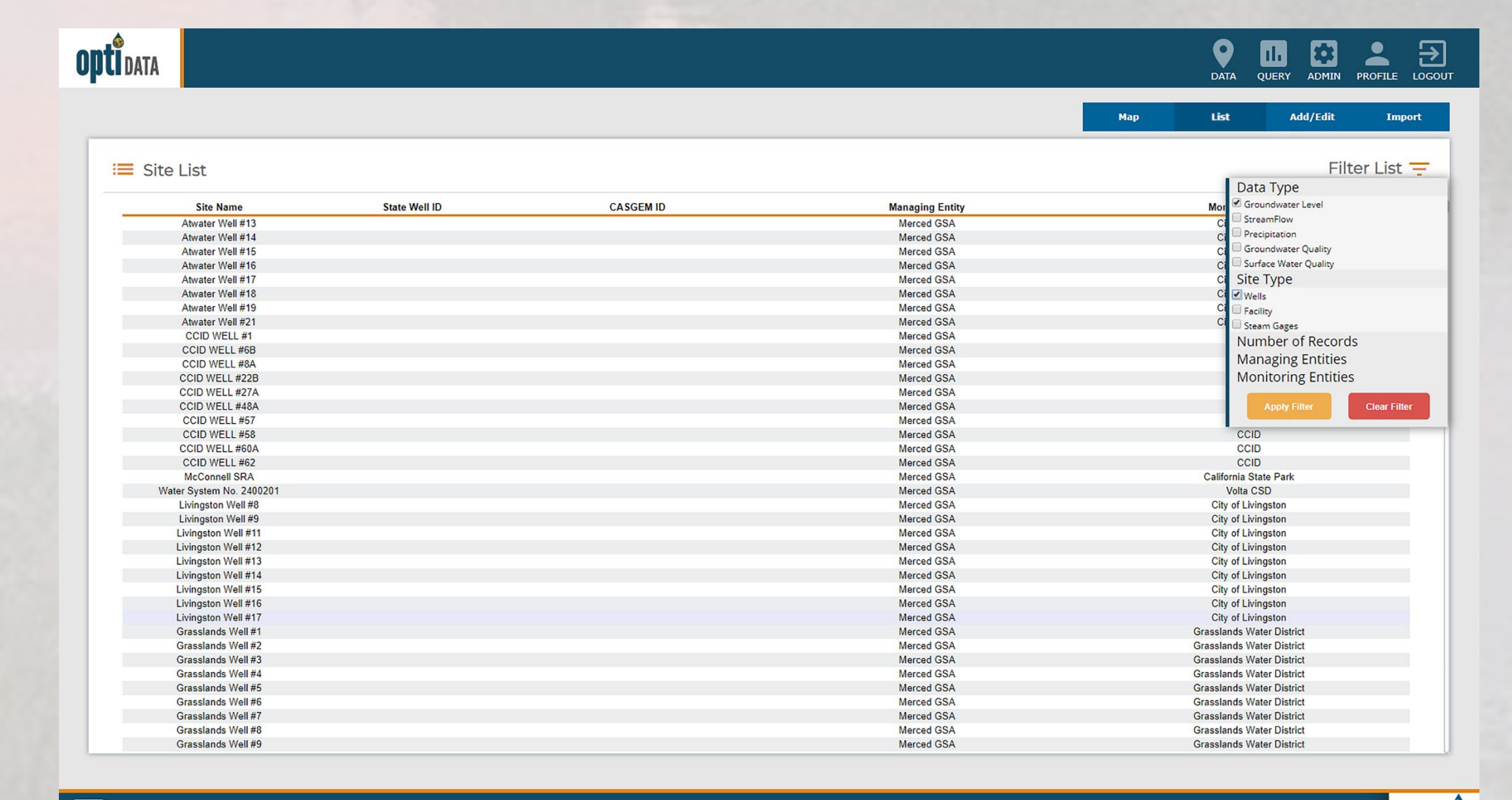
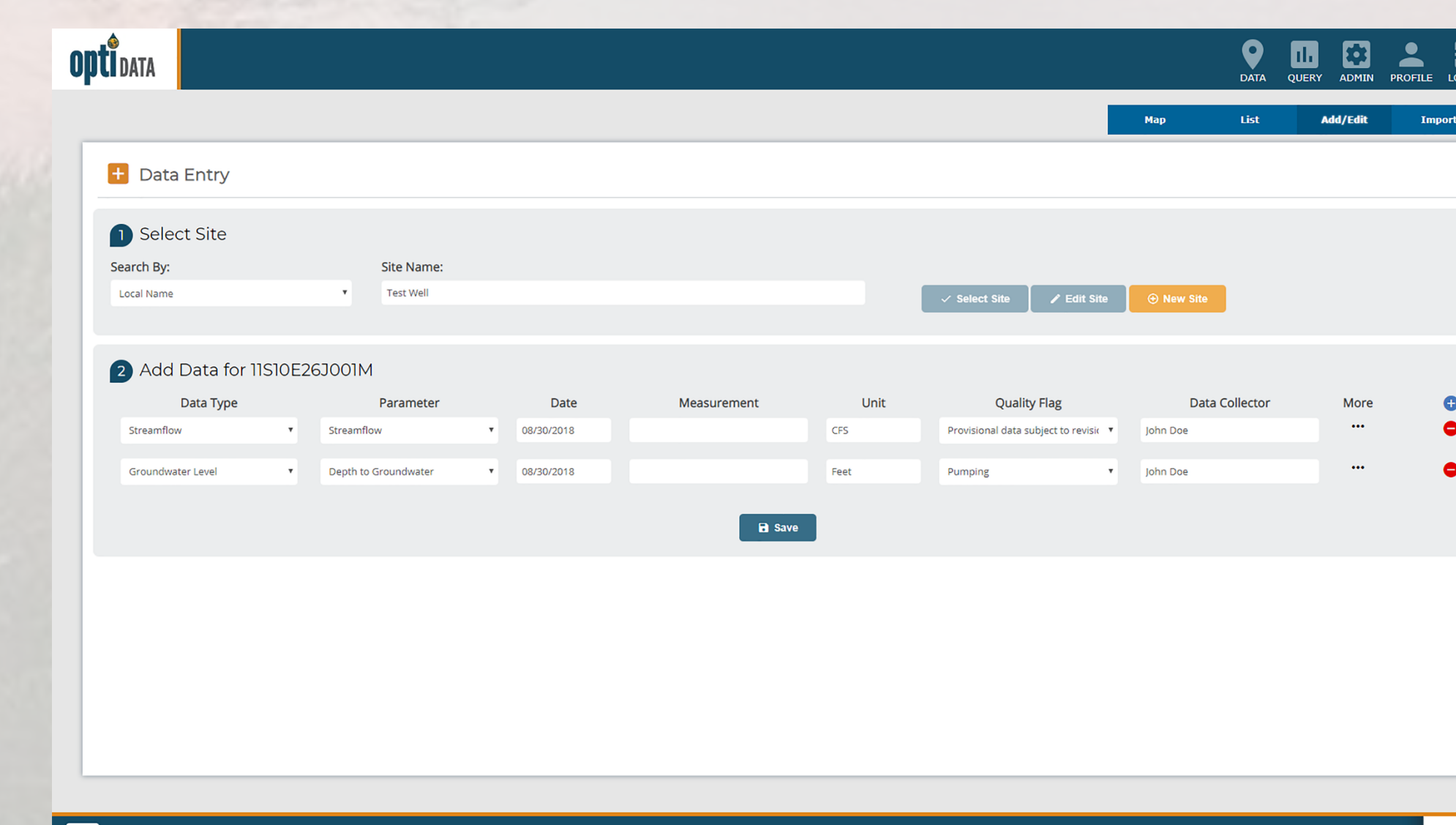


Image courtesy: Veronica Adrover/UC Merced



**EASTERN SAN JOAQUIN
GROUNDWATER AUTHORITY**